

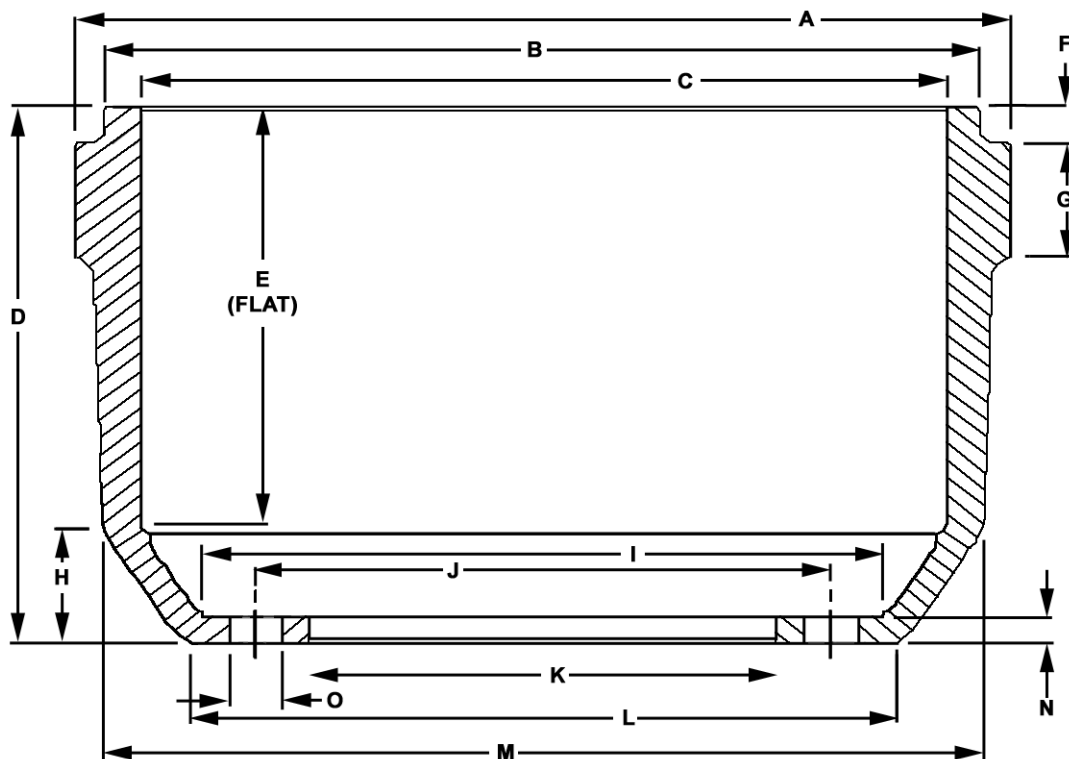


BRAKE DRUM DATA SHEET

When selecting a Webb replacement drum, the manufacturer's name and part number is helpful. If this information is not available, a replacement drum can be selected by comparing dimensions. A drawing is shown below which indicates the dimensions required to determine the existence of a replacement drum. If all of the dimensions shown are not available, we must have at least dimensions **C, D, E, J, K and O** to make a selection.

Information required for drums not listed in the catalog:

1. Wheel or Hub Number _____
2. Make and Number of Axle _____
3. Manufacturer's Brake Drum Number _____
4. Drum Type (see preceding page) _____
5. Actual Brake Drum Dimensions (See Figure Below) _____



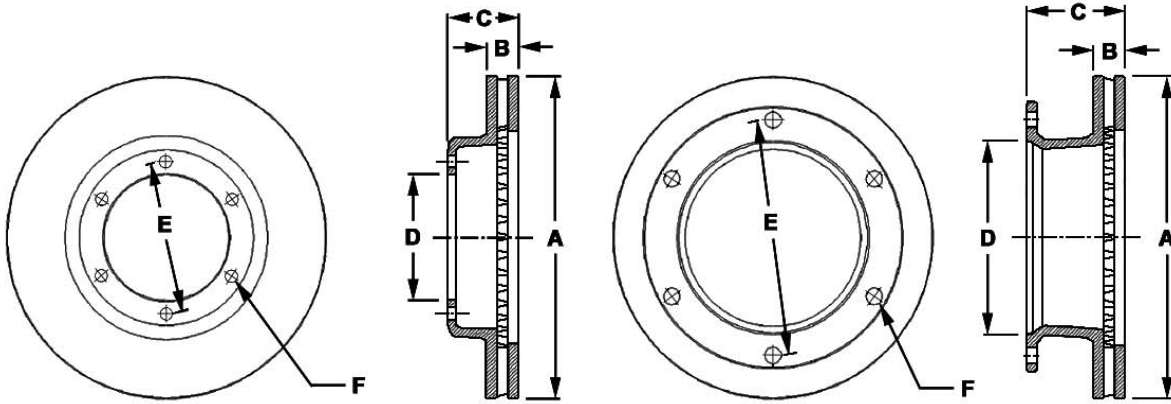
- A. Overall Diameter of Drum
- B. Dust Shield Recess Diameter, If Applicable
- C. Brake Surface Diameter
- D. Overall Depth
- E. Brake Surface Flat
- F. Depth of Dust Shield Recess
- G. Squeeeler Band Thickness
- H. Distance from Outside of Backface to Start of Taper

- I. Inside Finished Diameter
- J. Bolt Circle Diameter
- K. Pilot Diameter
- L. Outside Finished Diameter
- M. Diameter at Taper
- N. Backplate Thickness
- O. Bolt Holes: Number and Size



DISC BRAKE ROTORS DATA SHEET

A drawing is shown below which indicates the dimensions required to determine the existence of a replacement rotor.



HAT TYPE

U TYPE

- A. Overall Diameter
- B. Thickness
- C. Overall Depth
- D. Pilot Diameter
- E. Bolt Circle Diameter
- F. Bolt Holes: Number and Size